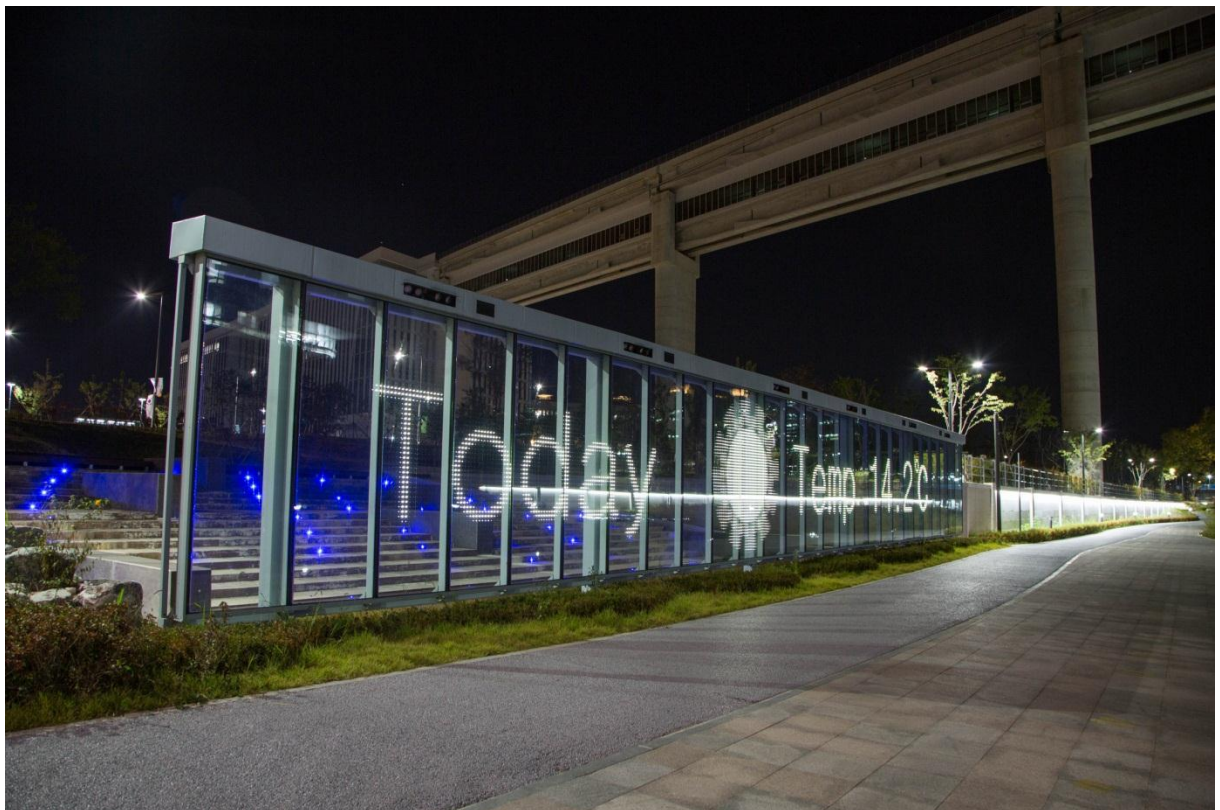


**powerglass®**

PETER PLATZ  
SPEZIALGLAS GMBH



MEDIA FACADE  
SEJONG CITY  
BANGCHUKCHEON  
KOREA  
2014

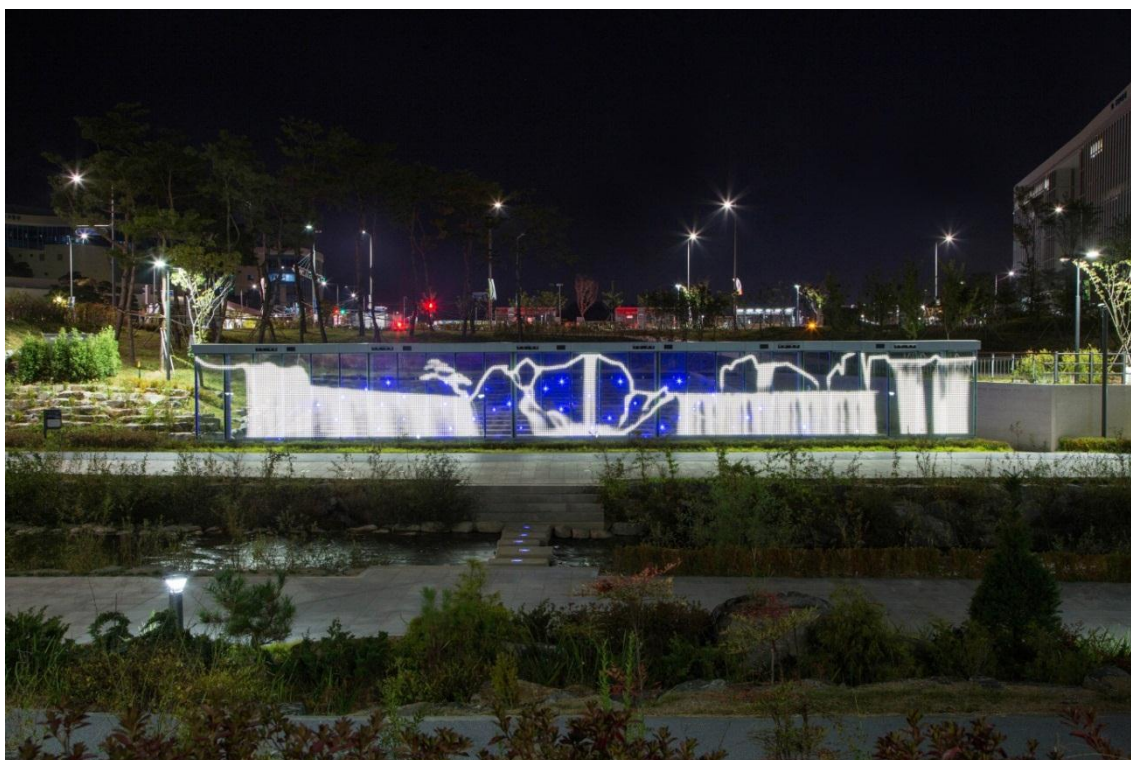


2014, a nearly 30 m long media balustrade has been installed in Sejong City / Bangchukcheon. Actual time, weather information as well as graphical artworks were depicted, for example swimming fishes as some kind of "digital aquarium". Highlight is a realistic waterfall with 3D effect, made of LED.

The approx. 90 m<sup>2</sup> media balustrade consists of 30 tempered, 18 mm thick powerglass® panels and 34.720 individual controllable, white LED. Integrated motion sensors make it possible to interact with park visitors.

**powerglass®**

PETER PLATZ  
SPEZIALGLAS GMBH



**PETER PLATZ**  
SPEZIALGLAS GMBH

AUF DEN PÜHLEN 5  
D-51674 WIEHL-BOMIG

T: +49 (0)2261 7890-0  
F: +49 (0)2261 7890-10

E: [INFO@P2SG.DE](mailto:INFO@P2SG.DE)  
WWW.P2SG.DE



**powerglass®**

PETER PLATZ  
SPEZIALGLAS GMBH



**PETER PLATZ**  
SPEZIALGLAS GMBH

AUF DEN PÜHLEN 5  
D-51674 WIEHL-BOMIG

T: +49 (0)2261 7890-0  
F: +49 (0)2261 7890-10

E: [INFO@P2SG.DE](mailto:INFO@P2SG.DE)  
WWW.P2SG.DE



## Technical Data

<b>Project</b>	media balustrade, Bangchukcheon, Sejong City, Korea
<b>Specification</b>	30 controllable powerglass® media façade elements
<b>Glass Construction</b>	10 mm float, tempered / 2 mm resin / 6 mm powerglass®, tempered
<b>Quantity</b>	30 panels
<b>Dimensions</b>	3000 x 985 x 18 mm per element
<b>m<sup>2</sup></b>	approx. 90 m <sup>2</sup>
<b>Lighting</b>	total: 34.720 white LED, light emitting to both sides
<b>LED Design</b>	raster
<b>LED Distance</b>	50 mm
<b>Power Supply</b>	48 V
<b>Period</b>	2014